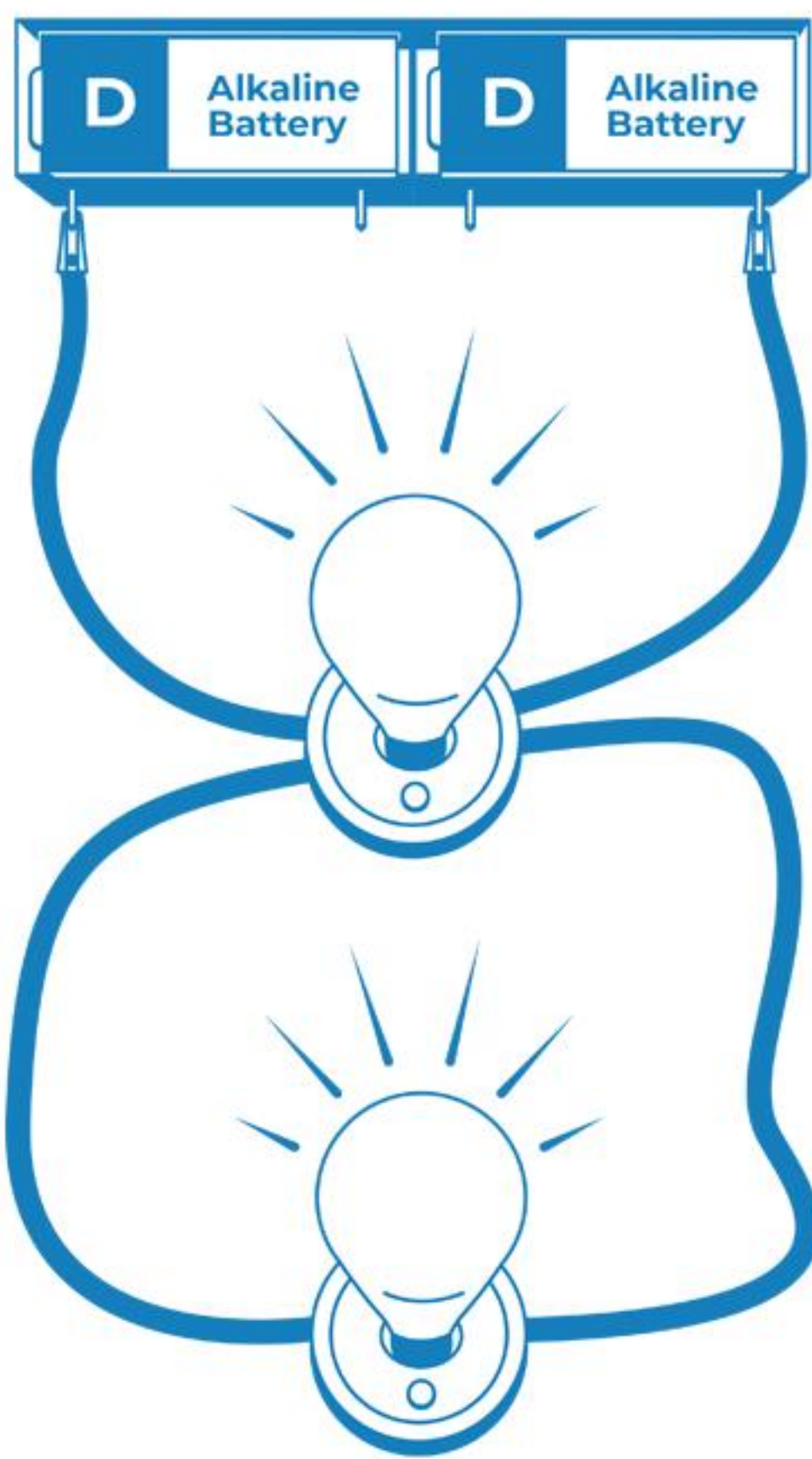


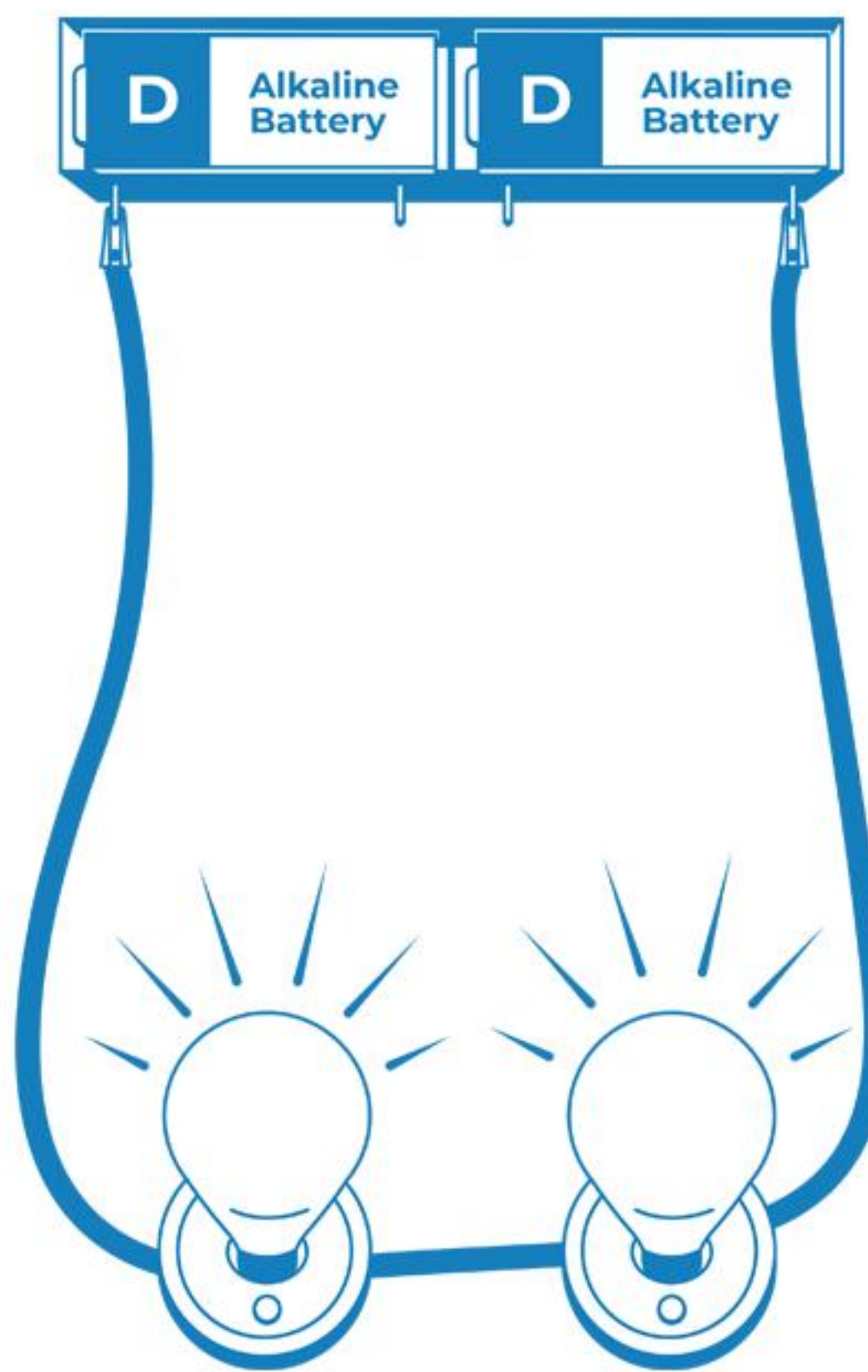
Name _____ Date _____

Circuit Mini Quiz!

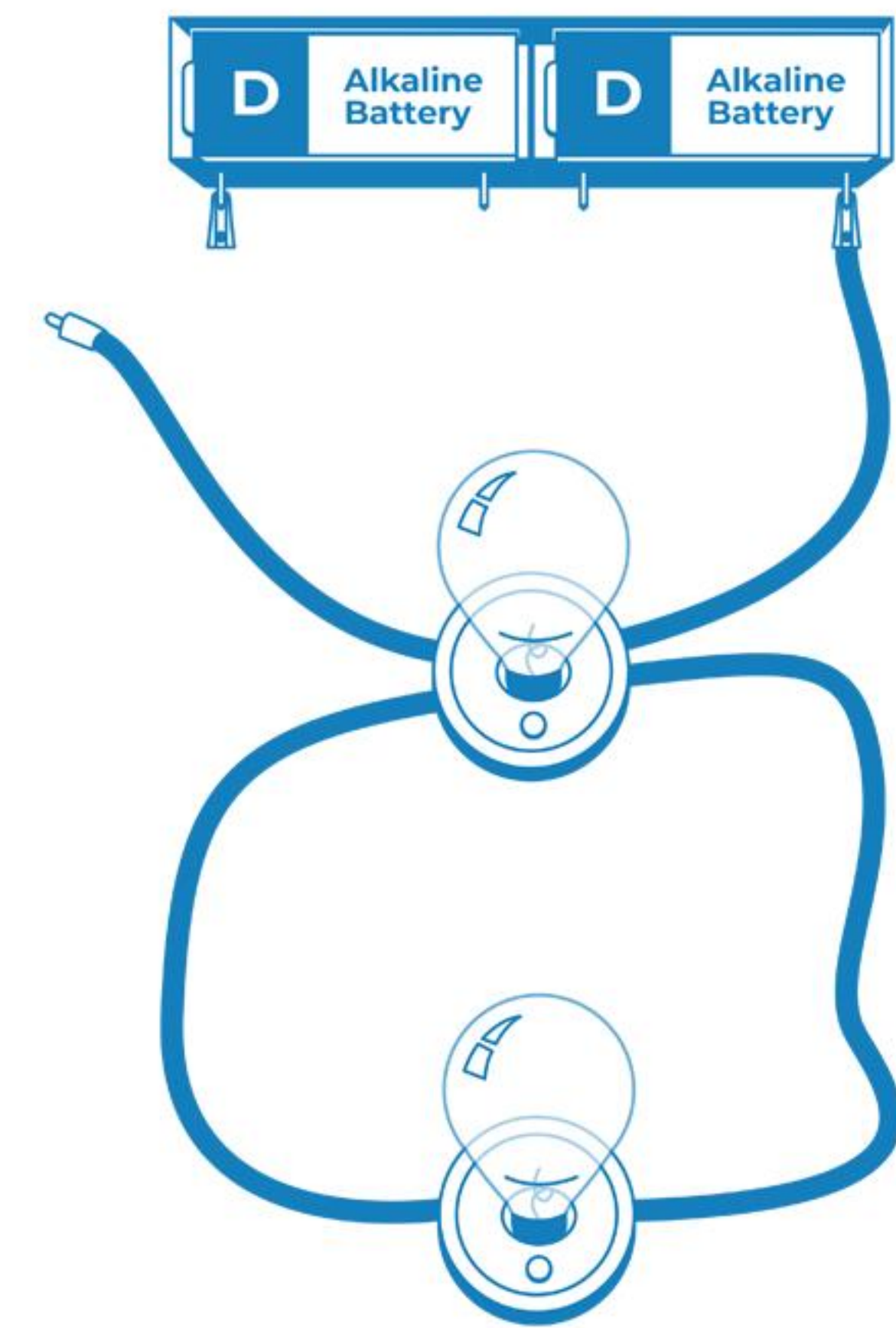
Instructions: In each box above the circuits, label appropriately as **parallel** or **series**.
Under each picture, circle whether the circuit is open or closed.



OPEN | CLOSED



OPEN | CLOSED



OPEN | CLOSED

Instructions: Circle the item below that helps make a circuit more energy-efficient!
Then write your answer below explaining why.



Energy Terms Challenge!

ENERGY EFFICIENCY : CIRCUITS, INSULATORS, AND CONDUCTORS

WORD BANK

energy	circuit	insulator	closed circuit	electric current	energy efficiency
watts	energy audit	conductor	open circuit	watt meter	electricity
power	lumens	power source	LED		

ACROSS

- 6. A material that slows the flow of energy.
- 7. The capacity to do work.
- 8. Using energy and technology wisely; use less energy to provide the same level of performance, comfort, convenience, or light.
- 9. The complete path or part of the path of an electric current.
- 12. Device used to measure energy used.
- 14. The origin of force or energy used to do work (ex: generator).
- 15. A flow of electricity through a conductor.
- 16. An incomplete path that does not allow electric current to flow.
- 17. A unit of measure for electrical energy (ex. amps).

DOWN

- 1. An assessment of how much energy a home consumes and the development of a plan to make the home more energy efficient.
- 2. A light-emitting diode.
- 3. A material that allows the flow of energy.
- 4. Traditional or “regular” light bulb.
- 5. Complete path allowing electric current to flow.
- 10. The brightness of a light.
- 11. Energy used to do an amount of work over time.
- 13. The flow or movement of charges.

